



## COI Studies

Jim Gronquist, PhD.



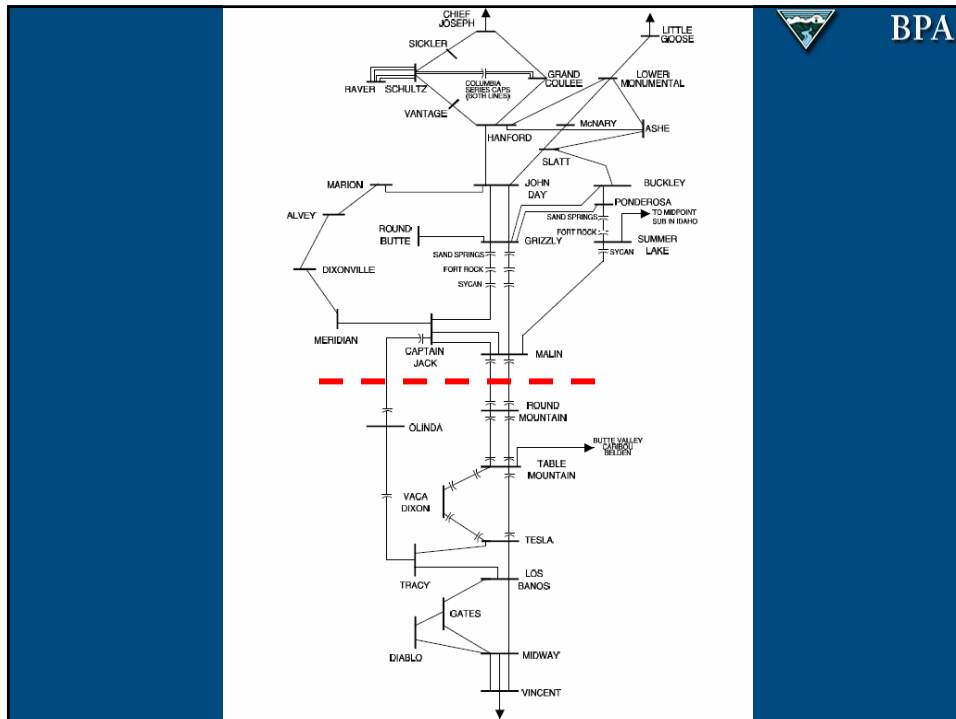
## Northern COI Owners

- Bonneville Power Administration
- Portland General Electric
- PacifiCorp



# California-Oregon Intertie

- The Pacific AC Intertie
  - Extends from John Day (BPA) to Vincent (SCE)
  - Malin--Round Mountain 500 kV cks 1 & 2
- COTP
  - Captain Jack--Olinda 500 kV ckt 1
- These projects make up path 66, the COI





## Heavily RAS'd

- NW gen dropping
- Chief Jo brake
- Fort Rock Series caps
- NW load dropping
- Feather River gen drop
- Calif pump dropping
- Olinda reactor
- Tracy reactor
- Series cap bypass on Olinda-Tracy
- Series cap bypass on Malin-Rnd MT
- MSC insertion (FACRI)

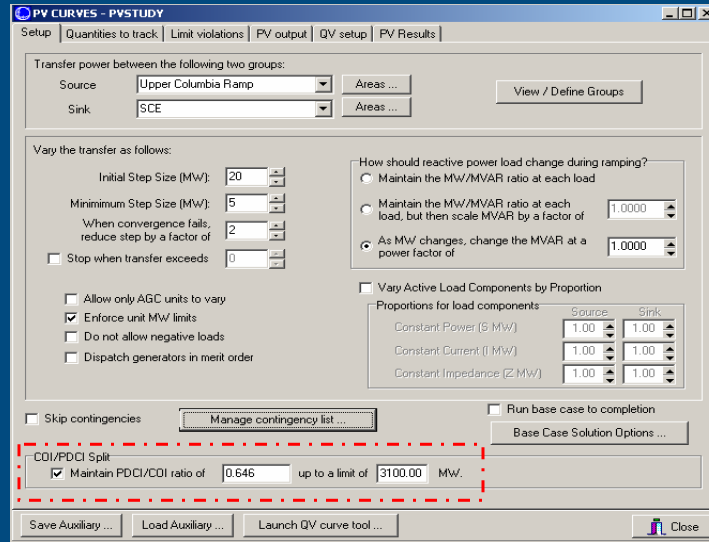


## North to South

- Critical outages
  - Loss of two Palo-Verde units
  - DC Bipole outage
- Typically voltage stability is limiting



# PWS PVQV tool is used



# PV Curve (w/switching)

